

BALLAHACK PRESERVE

Directions:

- From Route 82, travel east on Mt. Parnassus Road for about 3 miles.
- Take the 4th left onto Schulman-Veselak Road.
- Travel about 3/4 of a mile and turn left onto Ballahack Road.
- Take the next left onto Ballahack Road Extension.
- Park in the cul-de-sac at the bottom of the hill.

For more information or to report any problems during your visit , see:
www.ehlt.org

Trail Facts:

- ◇ The single red trail is .42 miles long.
- ◇ The trail extends from Ballahack Road Extension to Lake Shore Drive.
- ◇ The trail winds through mature hardwood, mountain laurel groves, side slopes and over knobs of ledge and moss.
- ◇ There are mostly gentle slopes with some short, steep sections.

Permitted Activities:

- ◆ Hiking
- ◆ Nature study
- ◆ Snowshoeing
- ◆ Mountain biking
- ◆ Birding

No motorized vehicles are allowed on the property.



EAST HADDAM
YOUTH AND FAMILY
SERVICES

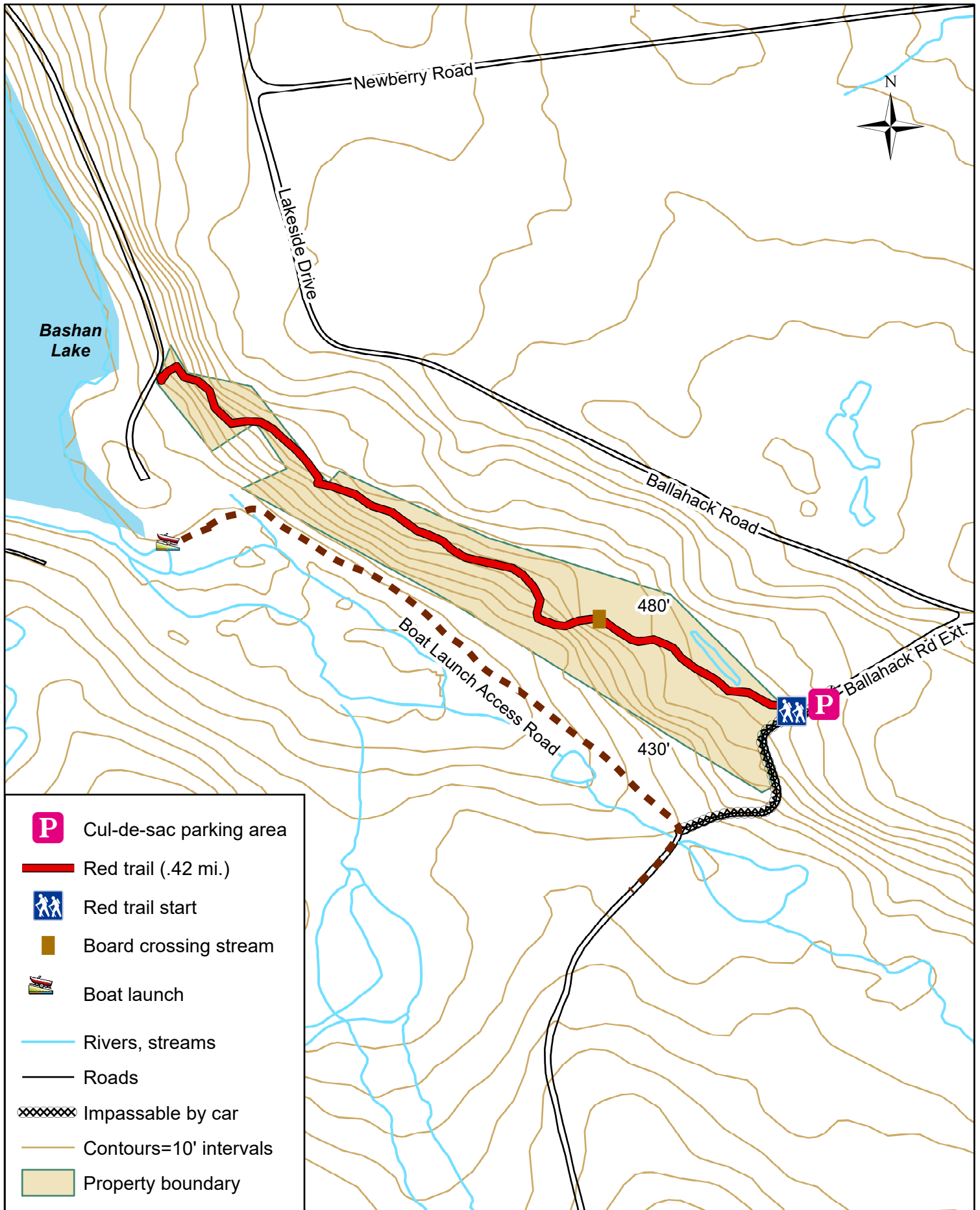
EAST HADDAM TRAILS

BALLAHACK PRESERVE

The 11-ACRE Ballahack Preserve was donated to the East Haddam Land Trust in the early 1990s. The preserve has varied terrain of wetland and upland hardwood habitats. There is a healthy understory of mountain laurel which flowers in mid-June. In the fall, witch hazel blossoms can be seen and in the winter, there are lovely views of Bashan Lake.



BALLAHACK PRESERVE



For general reference only

Managed by **EAST HADDAM LAND TRUST**

0 125 250 500 Feet